

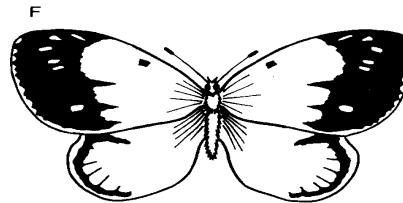
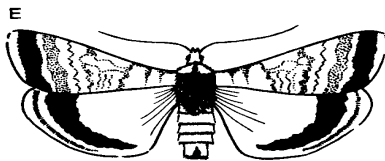
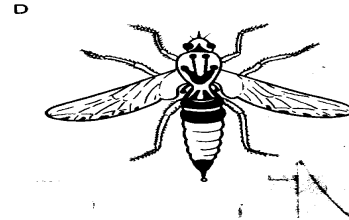
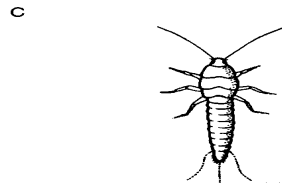
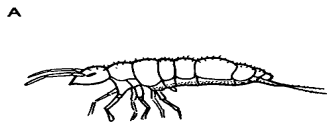
Bahamas Academy of Seventh-day Adventists

Biology Worksheet – Grade 10

Exercise on Naming and Classifying Living Things

Name: _____ Grade: _____ Date: _____

1. Look at the six illustrations of insects, labelled A – F. Use the classification key given to identify each of the insects. (*Write the name in the table which follows*)

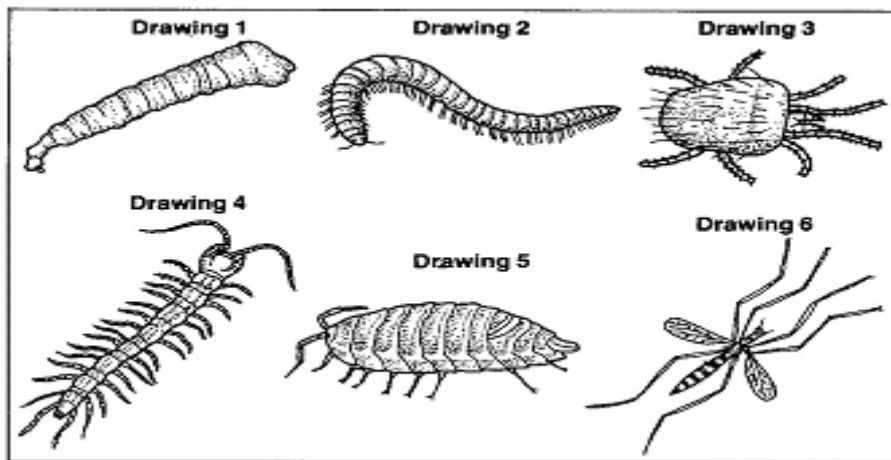


KEY

- | | |
|--------------------------------|-----------------------------------|
| 1. (a) wings absent | - go to number 2 |
| (b) wings present | - go to number 3 |
| 2. (a) three tail filaments | - silverfish |
| (b) two tail filaments | - springtail |
| 3. (a) one pair of wings | - go to number 4 |
| (b) two pairs of wings | - go to number 5 |
| 4. (a) end of abdomen pointed | - robber fly |
| (b) end of abdomen not pointed | - go to number 6 |
| 5. (a) club-shaped antennae | - clouded yellow butterfly |
| (b) pointed antennae | - large yellow moth |
| 6. (a) wings larger than body | - green lacewing |
| (b) wings shorter than body | - hoverfly |

INSECT	NAME
A	
B	
C	
D	
E	
F	

2. The drawings below show six invertebrate animals.



Use the numbered key given below to identify each of the animals. In each case write down the letter of the animal represented by the drawing in the table.

Key

- 1. More than 4 pairs of legsgo to 2
Four (4) pairs of legs go to 4
- 2. More than 15 body segmentsgo to 3
Less than 15 body segments**Animal A**
- 3. Two pairs of legs on each body segment**Animal B**
One (1) pair of legs on each body segment **Animal C**
- 4. No legs can be seen**Animal D**
Legs can be seengo to 5

5. Four (4) pairs of legs **Animal E**
Three (3) pairs of legs **Animal F**

DRAWING	ANIMAL
1	
2	
3	
4	
5	
6	